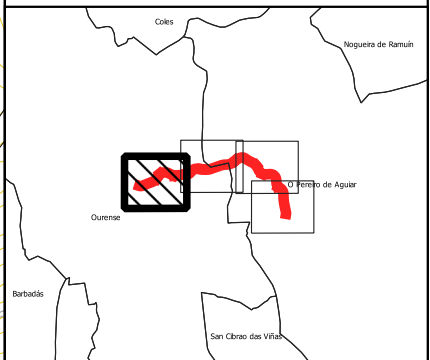


- Lenda cartografía
- UME OU-536
 - Estradas
 - Ferrocarril
 - Hidrografía
 - Bordes
 - Curvas de Nivel
 - Límite administrativo
 - Punto Kilométrico

- Lenda edificacións
- Edificio Residencial
 - Edificio Sanitario-Docente-Cultural
 - Edificio Industrial ou Terciario
 - Outro edificio

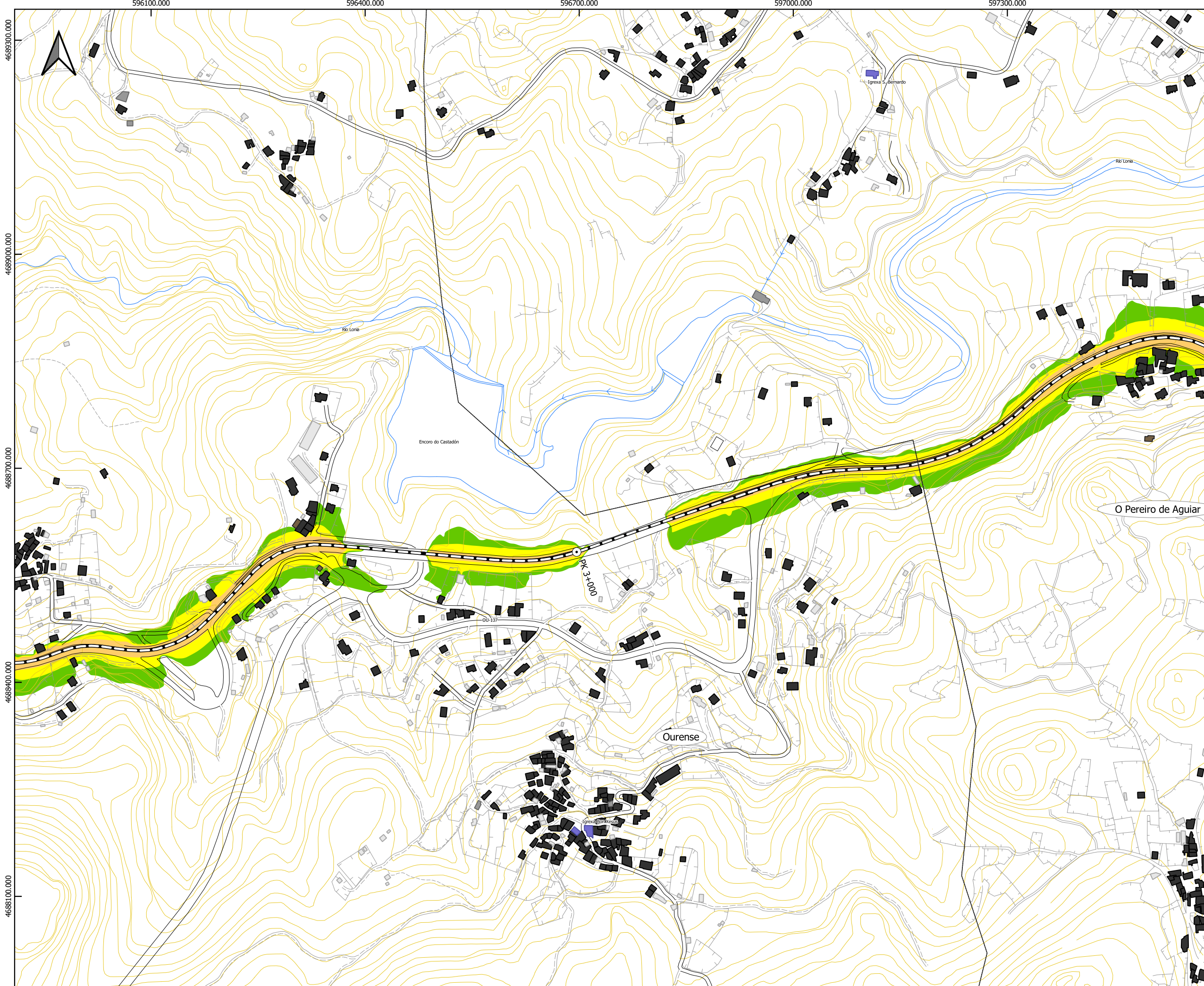
- Niveis sonoros Ln dB(A)
- 50-54 dB(A)
 - 55-59 dB(A)
 - 60-64 dB(A)
 - 65-69 dB(A)
 - ≥70 dB(A)

Plano guía



Plano de situación



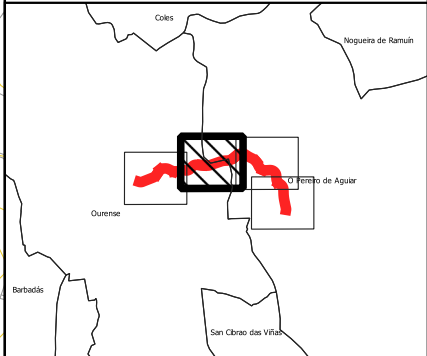


- Lenda cartografía
- UME OU-536
 - Estradas
 - Ferrocarril
 - Hidrografía
 - Bordes
 - Curvas de Nivel
 - Límite administrativo
 - Punto Kilométrico

- Lenda edificacións
- Edificio Residencial
 - Edificio Sanitario-Docente-Cultural
 - Edificio Industrial ou Terciario
 - Outro edificio

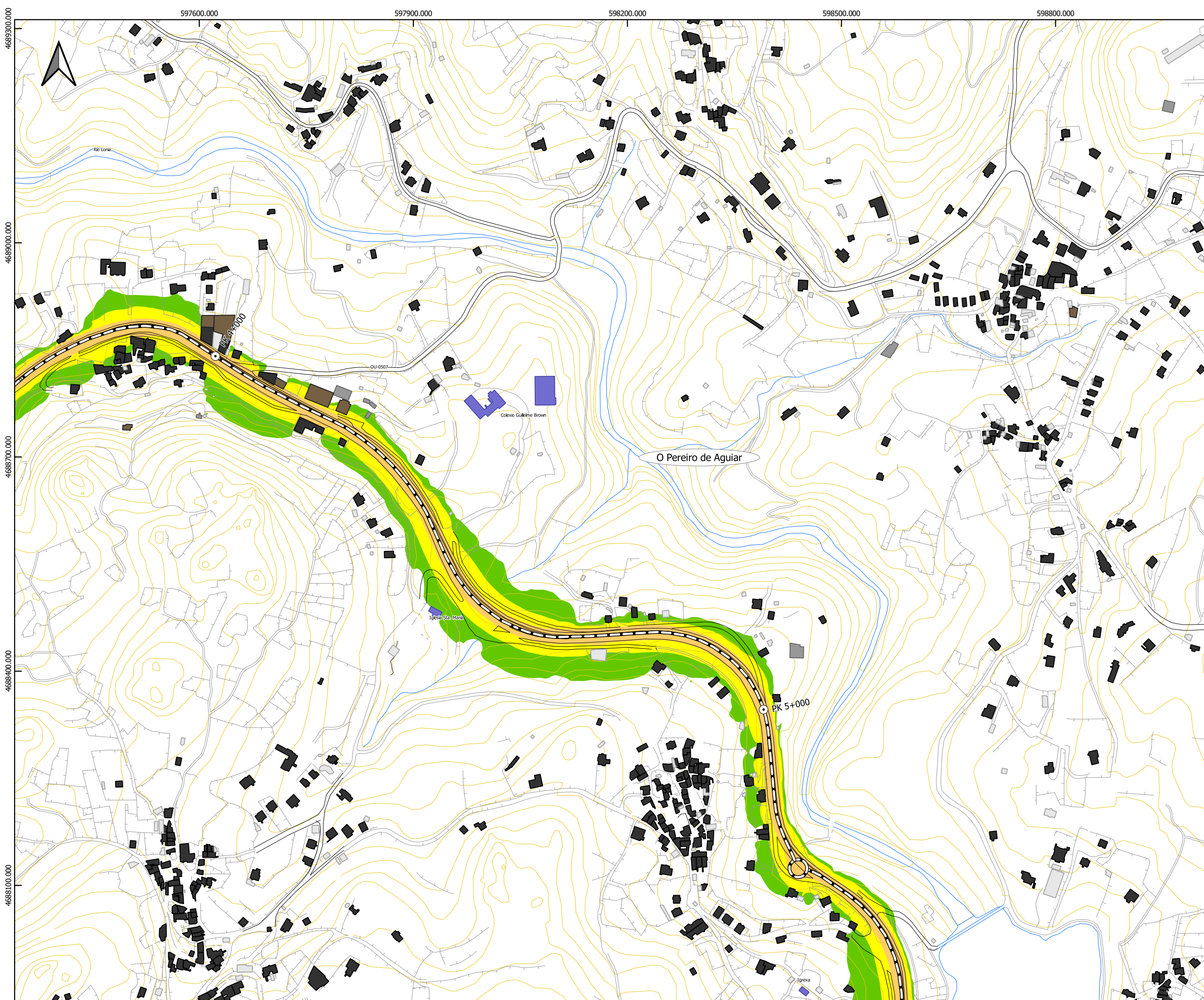
- Niveis sonoros Ln dB(A)
- 50-54 dB(A)
 - 55-59 dB(A)
 - 60-64 dB(A)
 - 65-69 dB(A)
 - ≥70 dB(A)

Plano guía



Plano de situación



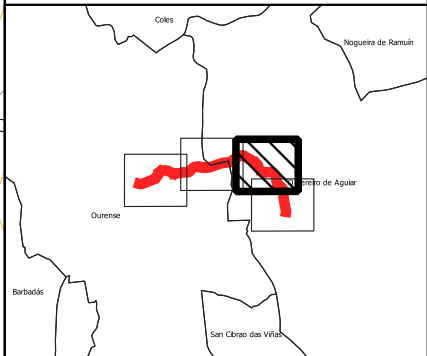


- Lenda cartografía
- UME OU-536
 - Estradas
 - Ferrocarril
 - Hidrografía
 - Bordes
 - Curvas de Nivel
 - Límite administrativo
 - Punto Kilométrico

- Lenda edificacións
- Edificio Residencial
 - Edificio Sanitario-Docente-Cultural
 - Edificio Industrial ou Terciario
 - Outro edificio

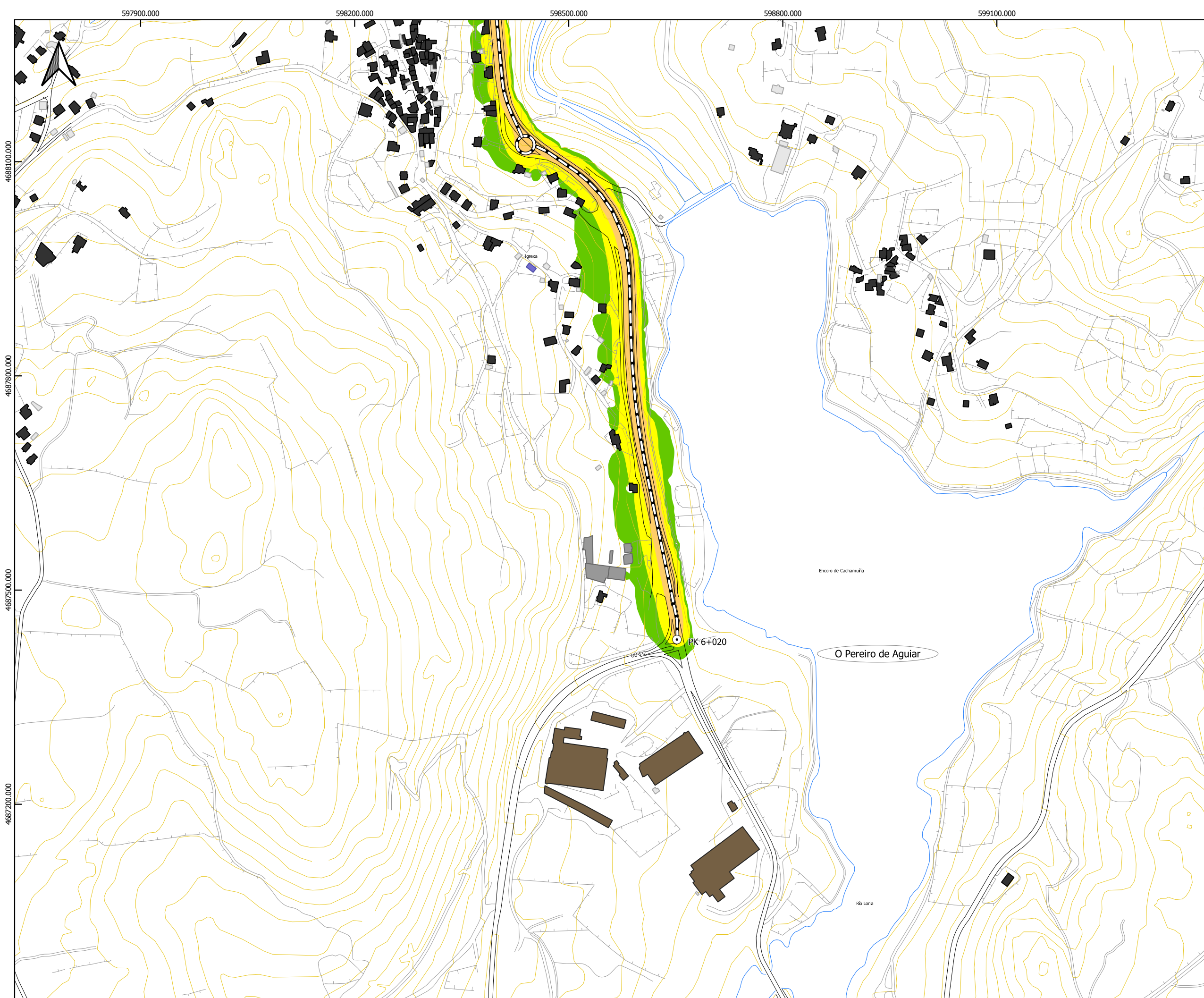
- Niveis sonoros Ln dB(A)
- 50-54 dB(A)
 - 55-59 dB(A)
 - 60-64 dB(A)
 - 65-69 dB(A)
 - ≥70 dB(A)









Plano guía













Plano de situación



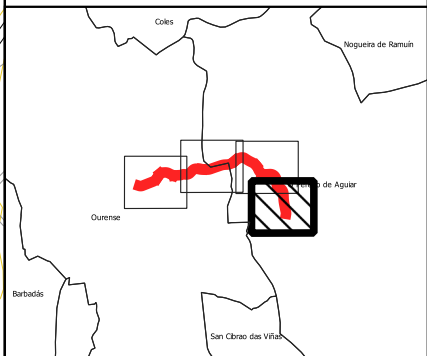


- Lenda cartográfica
-
-  UME OU-536
 -  Estradas
 -  Ferrocarril
 -  Hidrografía
 -  Bordes
 -  Curvas de Nivel
 -  Límite administrativo
 -  Punto Kilométrico

- Lenda edificacións
-
- | | | |
|---|---|----------------------------------|
|  | Edificio Residencial | |
|  | Edificio Sanitario-Docente-Cultural | |
|  |  | Edificio Industrial ou Terciario |
|  | Outro edificio | |

- Níveis sonoros Ln dB(A)
-
- | | |
|---|-------------|
|  | 50-54 dB(A) |
|  | 55-59 dB(A) |
|  | 60-64 dB(A) |
|  | 65-69 dB(A) |
|  | ≥70 dB(A) |

Plano guía



Plano de situación

